

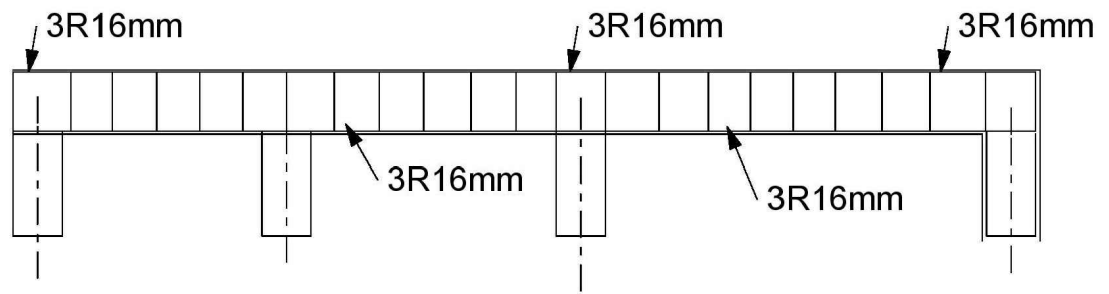
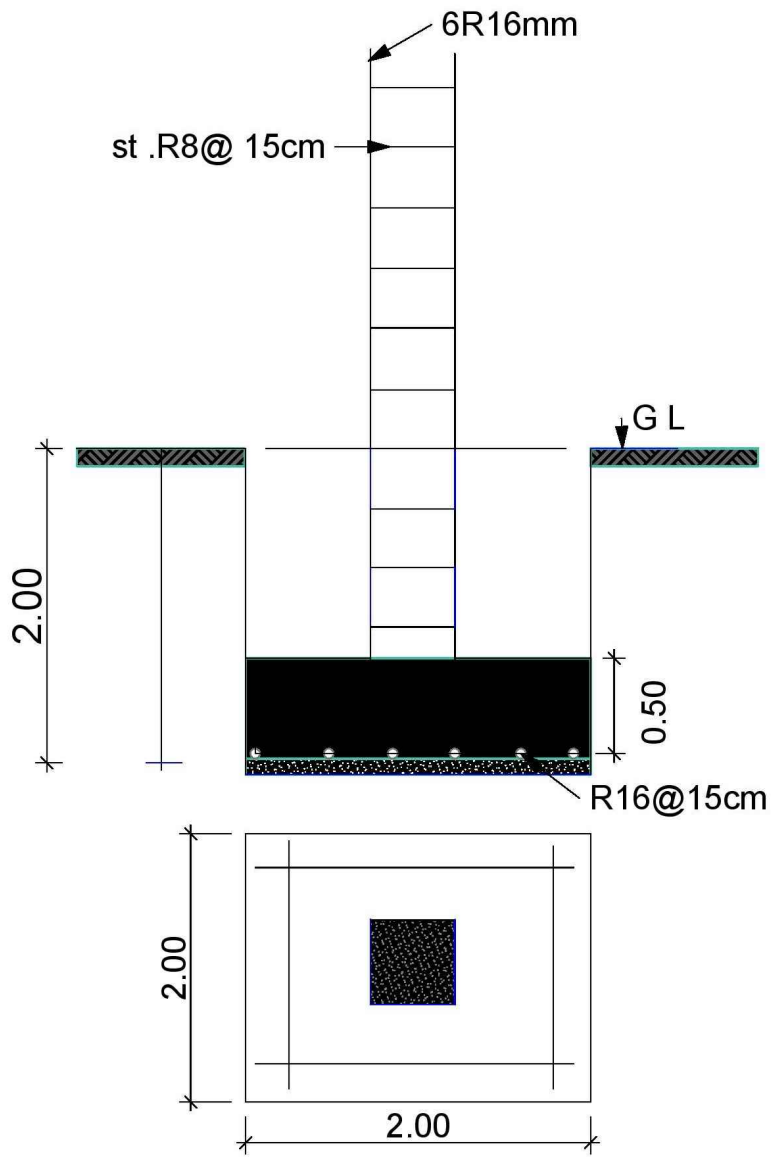


COMMISSIONER OF REFUGEES OFFICE  
3D  
EAST SUDAN

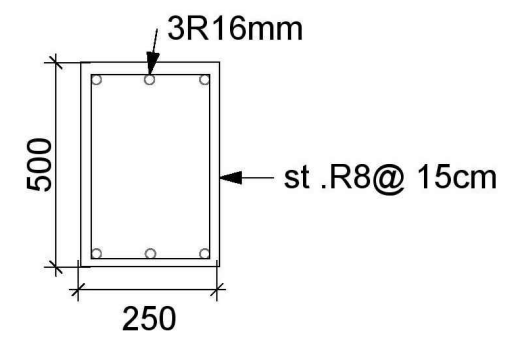
DESIGNED AND PREPARED BY:  
HOSAMELDIN AHMED  
UNHCR PHYSICAL SITE PLANNING

Date :  
05/09/2021

COORDINATES  
14° 2'9.72"N  
35°22'58.74"E



GREAD BEAM DETAILS



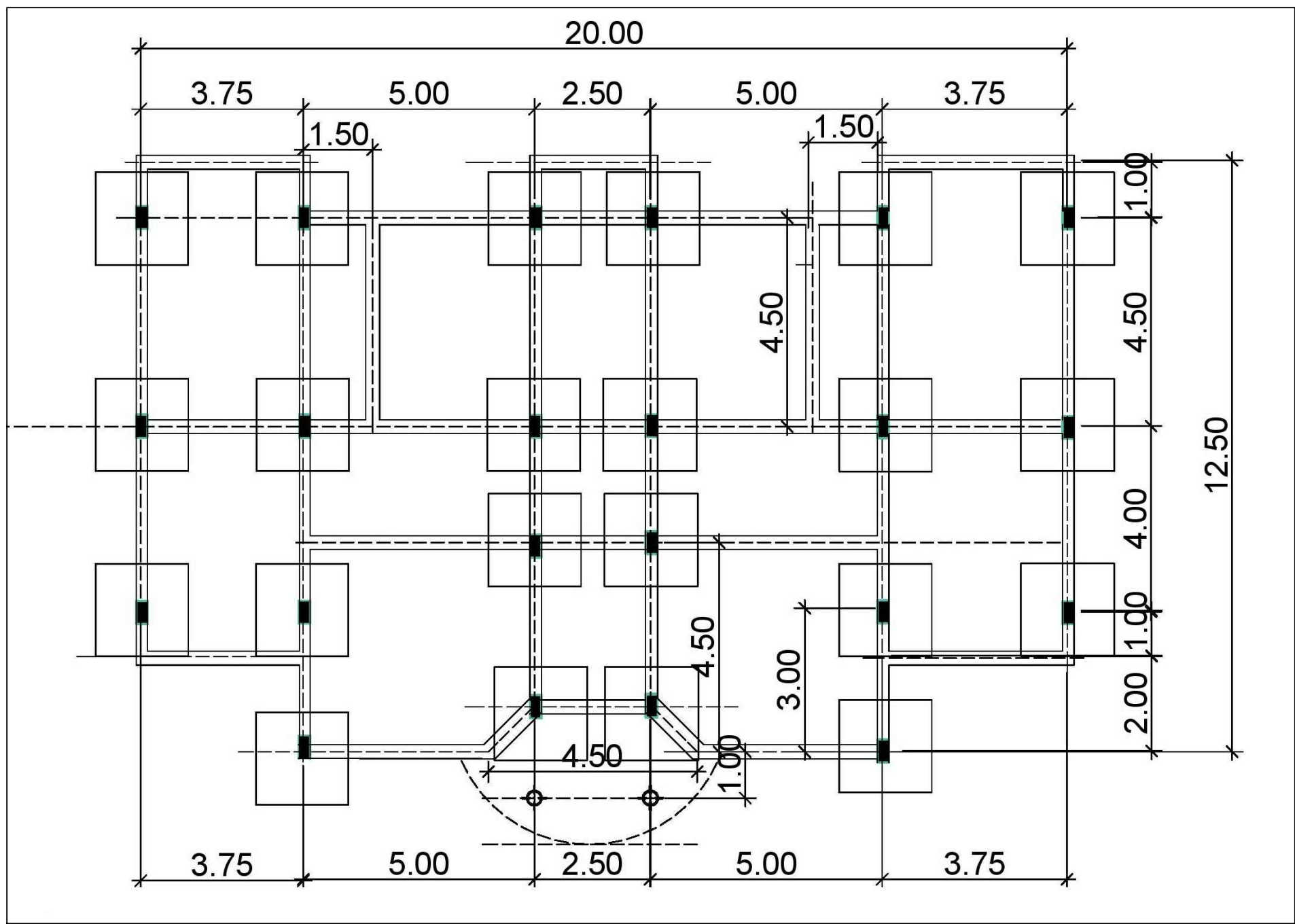
COLUMN DETAILS



COMMISSIONER OF REFUGEES OFFICE  
 BEAMS & COLUMN DETAILS  
 EAST SUDAN

DESIGNED AND PREPARED BY:  
 HOSAMELDIN AHMED  
 UNHCR PHYSICAL SITE PLANNING  
 Date :  
 05/09/2021

COORDINATES  
 14° 2'9.72"N  
 35°22'58.74"E

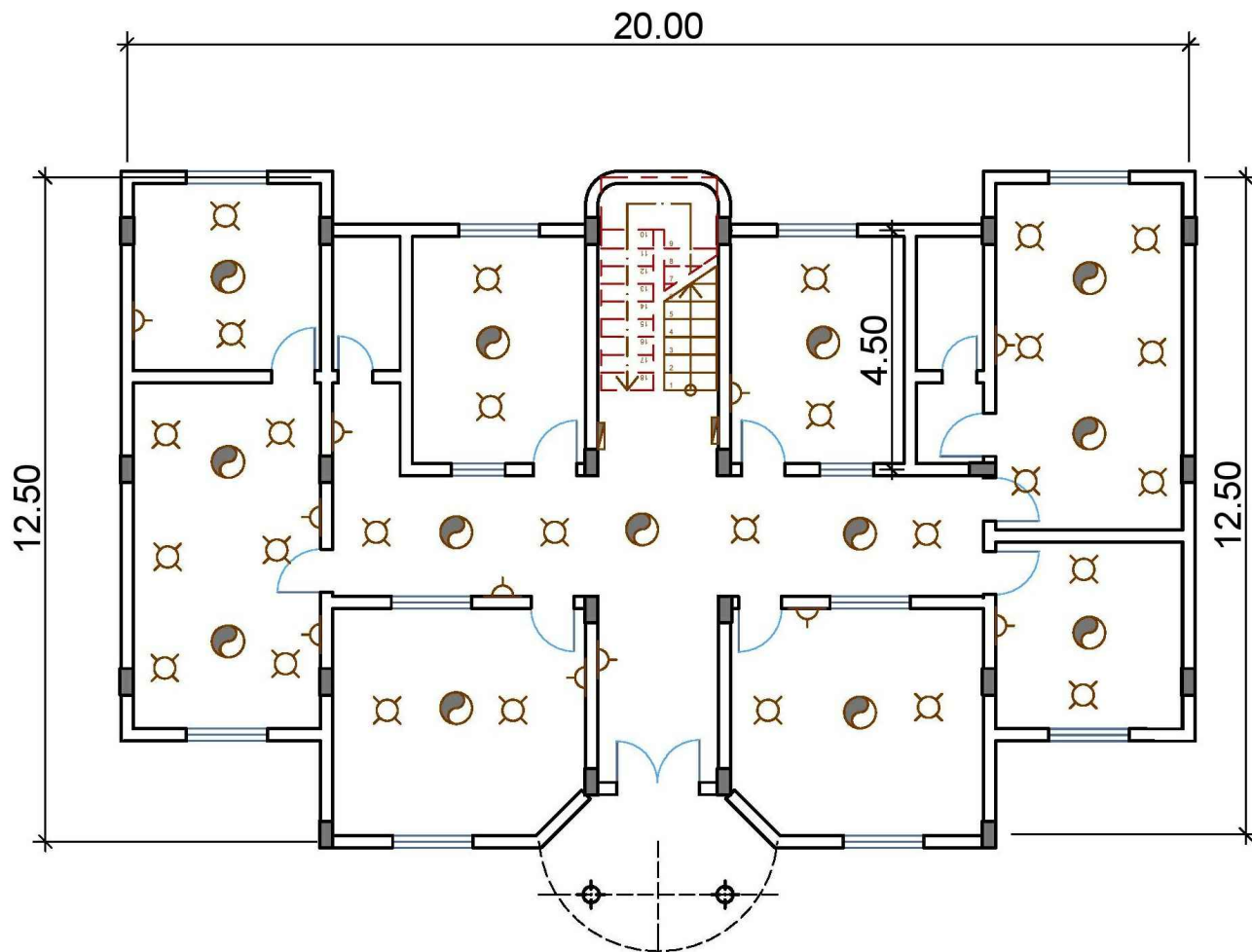


COMMISSIONER OF REFUGEES OFFICE  
GROUND FLOOR BEAMS  
EAST SUDAN

DESIGNED AND PREPARED BY:  
HDSAMELDIN AHMED  
UNHCR PHYSICAL SITE PLANNING

Date :  
05/09/2021

COORDINATES  
14° 2'9.72"N  
35°22'58.74"E



Symbol	Description
	Ceiling Fan
	Ceiling Lamp
	Distribution Board
	10 AMP Socket
	25 AMP Socket

**GROUND FLOOR PLAN**

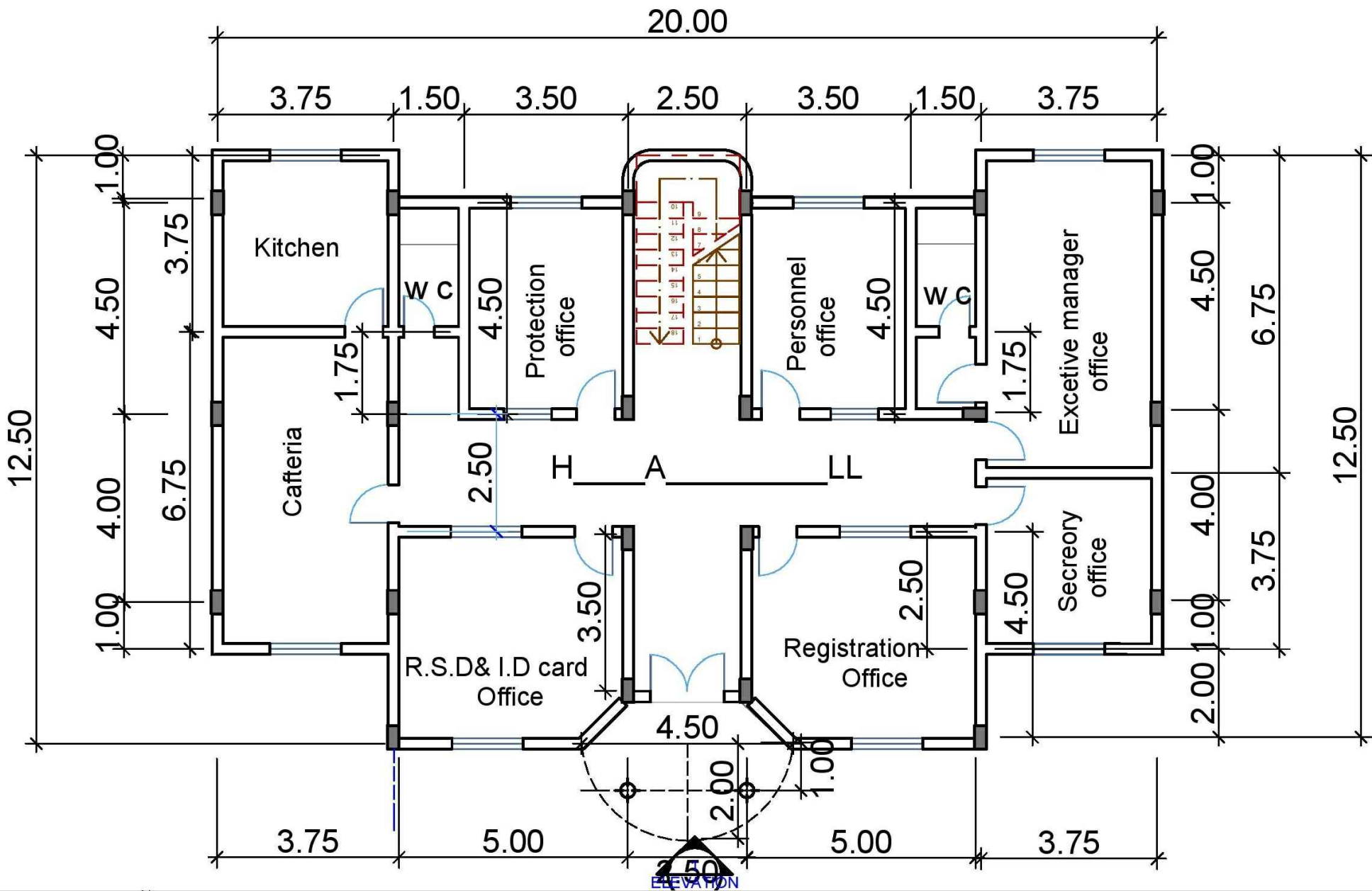


**COMMISSIONER OF REFUGEES OFFICE  
GROUND FLOOR ELECTRICAL PLAN  
EAST SUDAN**

DESIGNED AND PREPARED BY:  
HOSAMELDIN AHMED  
UNHCR PHYSICAL SITE PLANNING

Date :  
05/09/2021

COORDINATES  
14° 2'9.72"N  
35°22'58.74"E



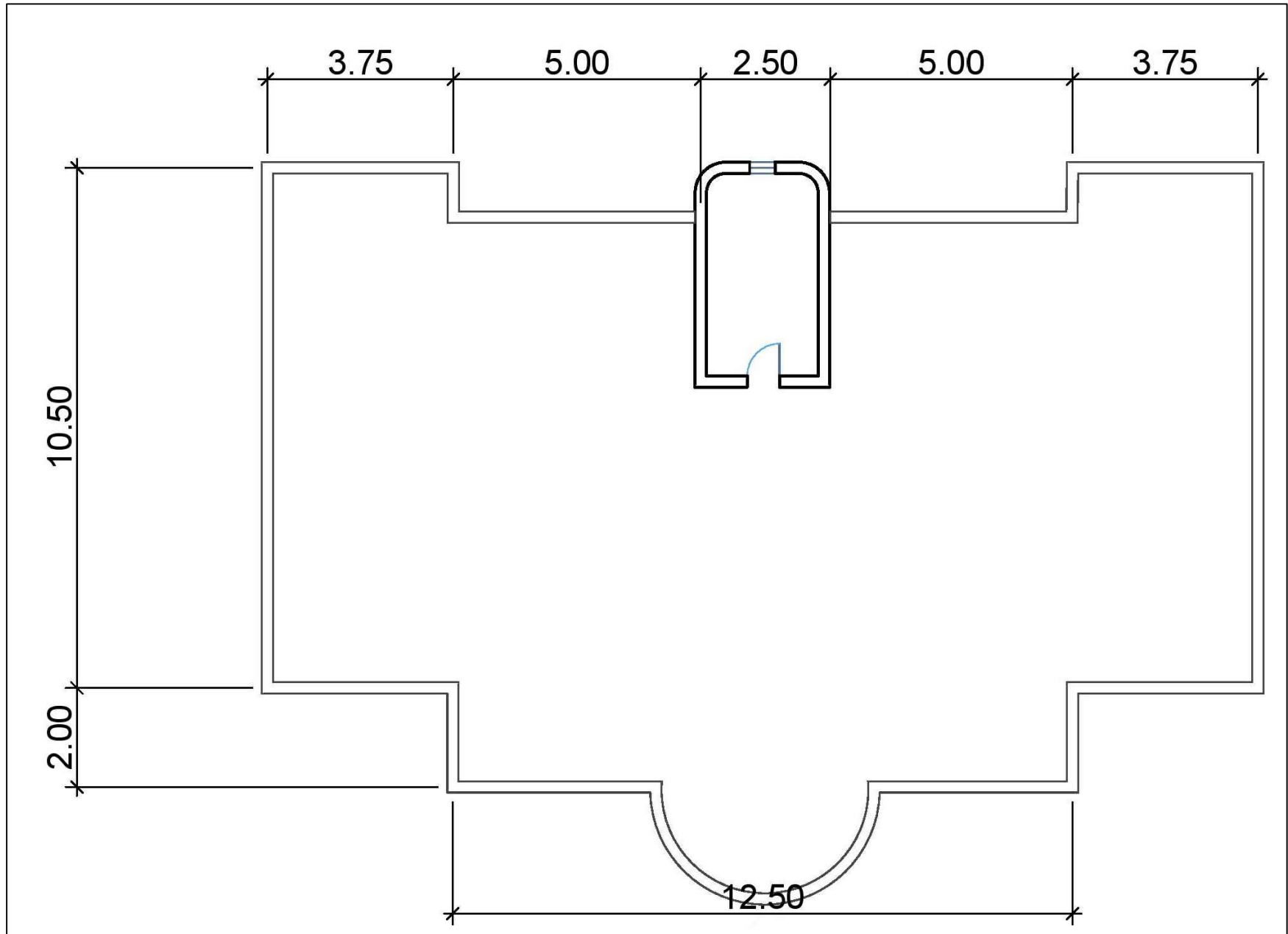
COMMISSIONER OF REFUGEES OFFICE  
GROUND FLOOR PLAN  
EAST SUDAN

DESIGNED AND PREPARED BY:  
HOSAMELDIN AHMED  
UNHCR PHYSICAL SITE PLANNING

Date :  
05/09/2021

COORDINATES

14° 2'9.72"N  
35°22'58.74"E

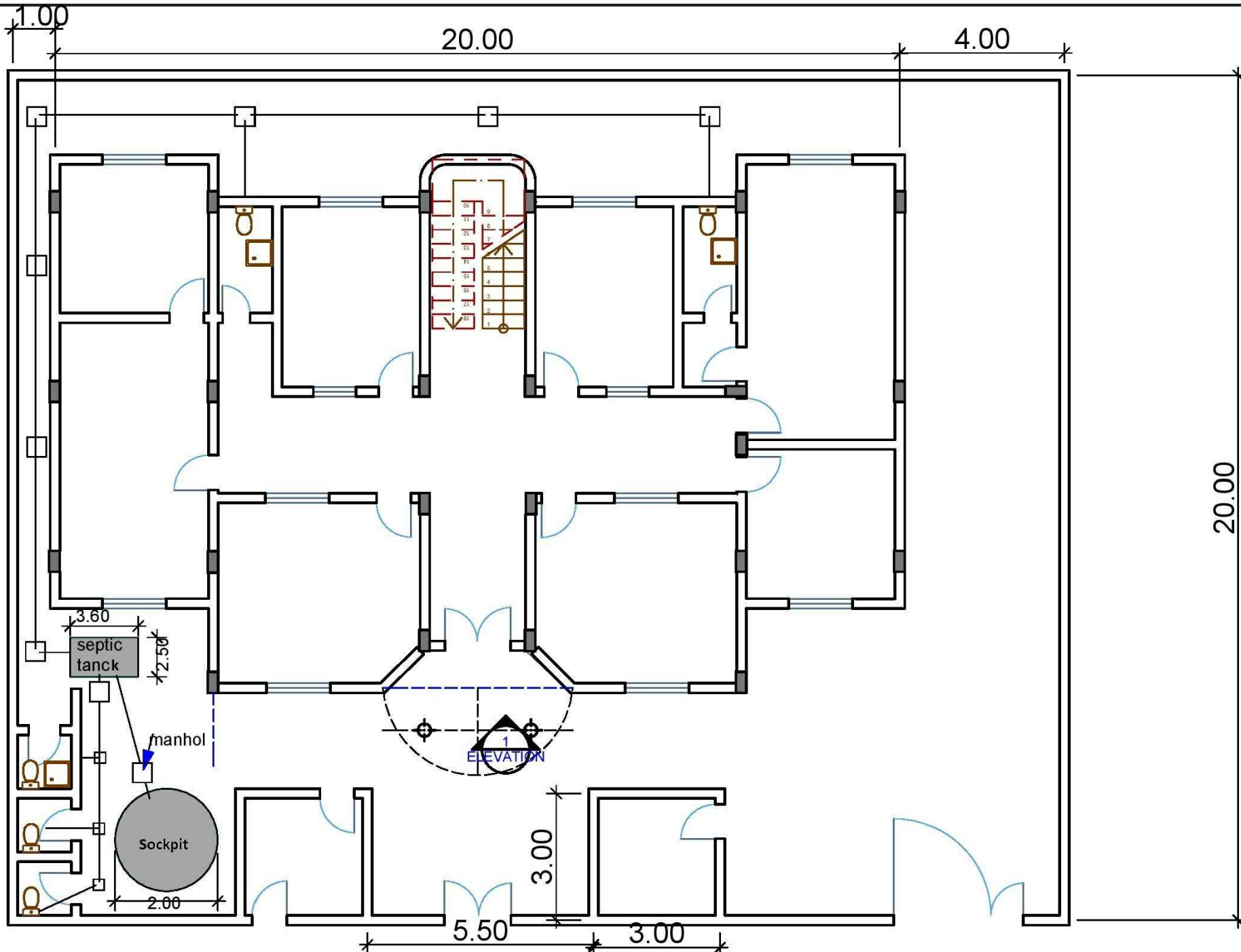


COMMISSIONER OF REFUGEES OFFICE  
LAYOUT  
EAST SUDAN

DESIGNED AND PREPARED BY:  
HOSAMELDIN AHMED  
UNHCR PHYSICAL SITE PLANNING

Date :  
05/09/2021

COORDINATES  
14° 2'9.72"N  
35°22'58.74"E



COMMISSIONER OF REFUGEES OFFICE  
SANITARY PLAN  
EAST SUDAN

DESIGNED AND PREPARED BY:  
HOSAMELDIN AHMED  
UNHCR PHYSICAL SITE PLANNING

Date :  
05/09/2021

COORDINATES  
14° 2'9.72"N  
35°22'58.74"E